

# AUSLIFT EQUIPMENT



Variable and Powerful



## Toplift Material Lift

# The Versatile Toplift from Böcker

## Unrivalled in flexibility!

The Toplift is the lightweight and economical material lift from Böcker. It impresses most of all by its fast transport and easy assembly. The light aluminium rails are simply screwed together, and the lift can then be easily installed thanks to its low weight. The drive unit is comfortably hooked in at the front. The low dead weight and automatic locking function provide additional comfort.



## The most important details

- Max. hoisting height 20.30 m
- Load capacity up to 250 kg
- Easy assembly due to low dead weight of the components
- Low space requirement, therefore ideal for truck loading
- Practical installation of the unit from the front
- Assembly completely without tools
- Easy maintenance drive unit
- Plug-in electrical cables
- Easy operation from the ground and the head set\*
- Soft start-up function\* for gentle furniture transportation
- Firm stand due to large foot plates
- Slack cable device prolongs the service life of the hoisting cable
- Furniture platform rotating and extendible or only extendible
- Strong, plug-in type side flaps made of side wall profiles
- Telescopic supports for the easy adjustment of the platform bed inclination
- Extensive range of accessories available



\* only model 236 MV





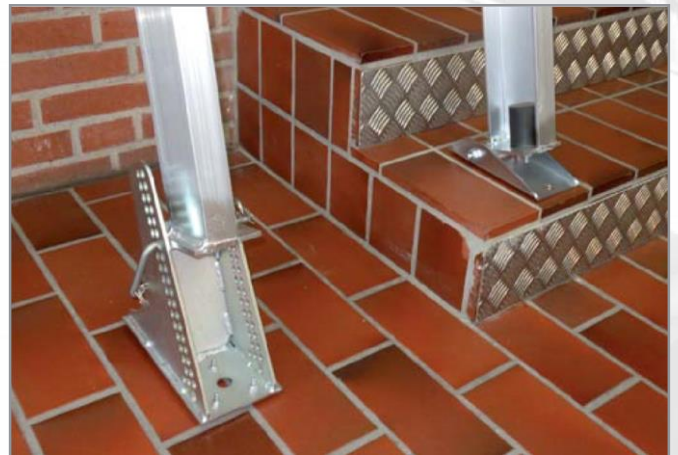
Easy hooking into the drive unit



Operation via the headset\*



Furniture platform rotating and extendible



Adjustable foot for the compensation of steps, for example

## Technical data

Model	Toplift 236 MV	Toplift 200 M1	Toplift 200 M2
load capacity [kg]	250	200	200
Hoisting speed [m/min]	0-36	34	20 / 40
Max. hoisting height [m]	20, 30	20,30	20, 30
Cable diameter [mm]	6	6	6
voltage [V / Hz]	230 / 50	230 / 50	230 / 50
Control voltage [V]	24	24	24
Drive unit weight [kW]	54	54	54

Technical modifications reserved.



## **Contact Details**

### **Auslift Equipment**

**Factory 2/ 2-4 Souffi Place  
Dandenong South. Vic. 3175**

**Phone: (03) 9702 7977**

**Fax: (03) 9702 7966**

**Mobile: 0433 175 243**

**Email: [sales@auslift.com.au](mailto:sales@auslift.com.au)**

**Website: [www.auslift.com.au](http://www.auslift.com.au)**

