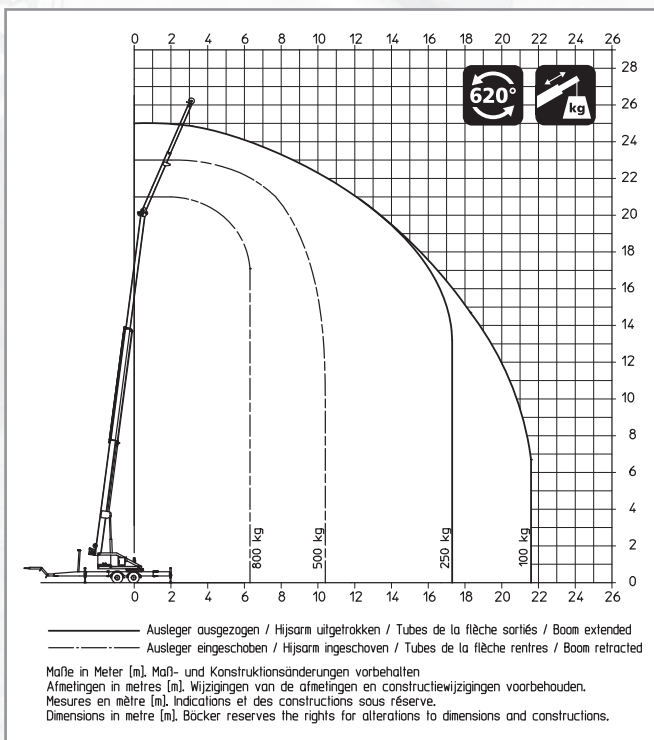


# Aluminium Trailer Crane AHK 25/800 PLC



## Duty chart



## Technical specifications

Payload max. [kg]	800
Extension length max. [m]	25.00
Main boom length max. [m]	20.00
Jib extendible [m]	3.85 to 6.00
Main boom angle approx. [degrees]	85
Jib angle approx. [degrees]	mech. 135 / 150 / 165
Lifting speed approx. [m/min]	45
Support to both sides L x W [m]	5.20 x 5.20
Support to one side L x W [m]	6.80 x 3.65
Vehicle dimensions L x W x H [m]	8.50 x 2.20 x 2.55
Gross vehicle weight [kg]	2,700

All rights reserved for changes in dimension and construction.