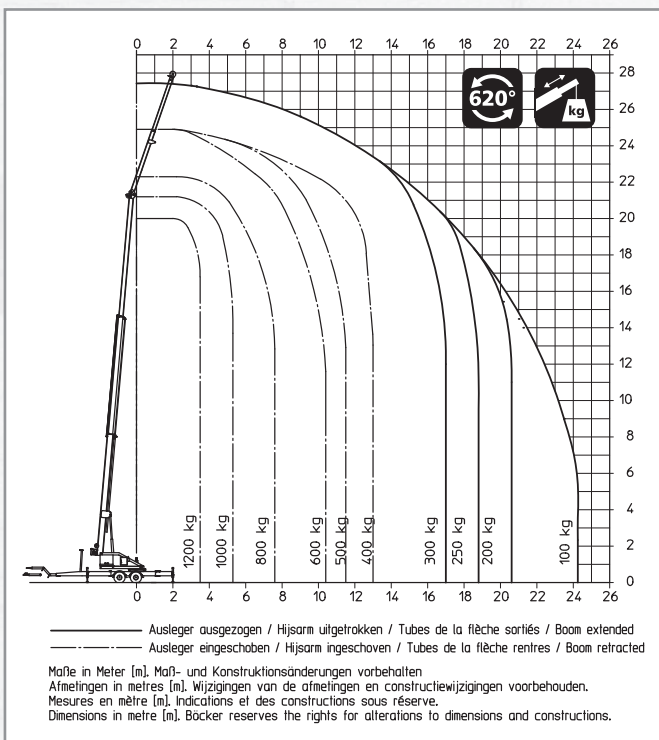


Aluminium Trailer Crane AHK 27/1200 PLC



Duty chart



Technical specifications

Payload max. [kg]	1,200
Extension length max. [m]	27.00
Main boom length max. [m]	22.00
Jib extendible [m]	4.30 to 7.00
Main boom angle approx. [degrees]	85
Jib angle approx. [degrees]	mech. 135 / 150 / 165
Lifting speed approx. [m/min]	40
Support to both sides L x W [m]	5.40 x 5.40
Support to one side L x W [m]	7.30 x 3.75
Vehicle dimensions L x W x H [m]	9.00 x 2.20 x 2.60
Gross vehicle weight [kg]	3,500

All rights reserved for changes in dimension and construction.