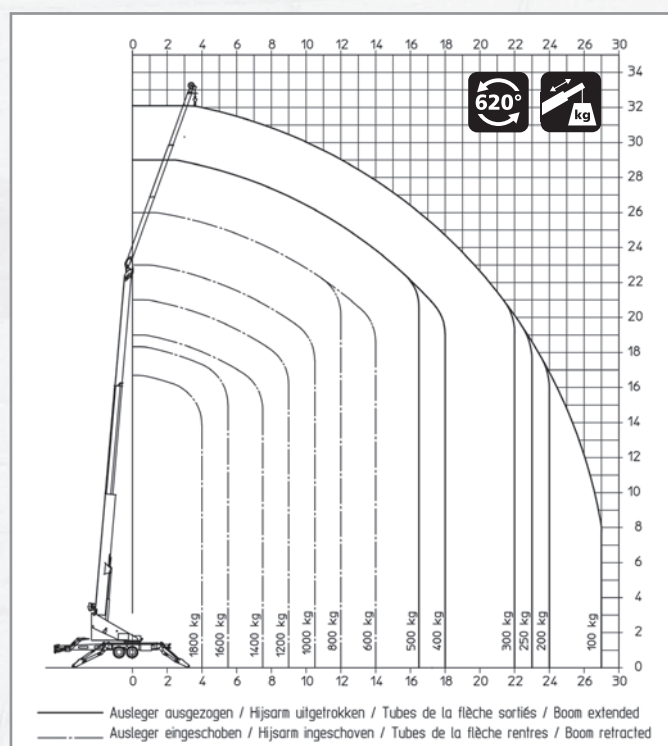


Trailer Crane AHK 34/1800



Duty chart



Technical specifications

Payload max. [kg]	1,800
Extension length max. [m]	34.00
Main boom length max. [m]	22.00
Jib extendible [m]	5.00 to 11.20
Main boom angle approx. [degrees]	85
Jib angle [degrees]	hydraulic 0 to 165
Lifting speed approx. [m/min]	60
Support to both sides L x W [m]	5.40 x 5.40
Support to one side L x W [m]	7.20 x 3.60
Vehicle dimensions L x W x H [m]	9.20 (6,90) x 2.10 x 2.72
Gross vehicle weight [kg]	3,500

All rights reserved for changes in dimension and construction.